

Link Touch

LNK-T15-IP-WIN



Product Overview

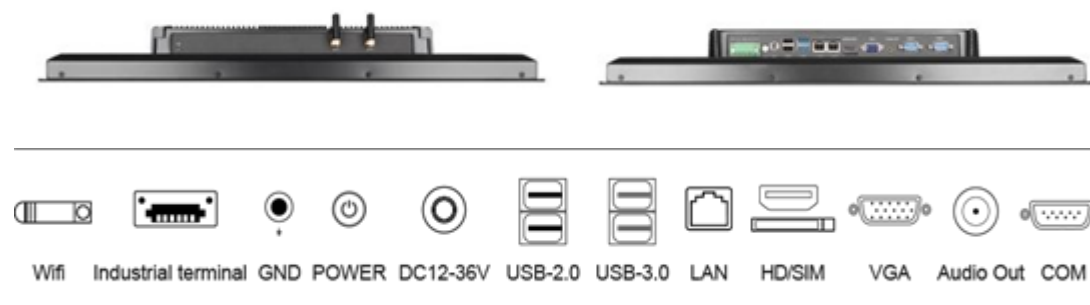
Thank you for purchasing a Link Touch display.

The overall use of flat aluminium alloy panel, fan-less fully enclosed integrated design. Meet the requirements of different equipment in different environments. It is widely used in industrial control, military, communication, power, network, intelligent self-service terminal equipment and other automation applications.

The LinkTouch **LNK-T15-IP-WIN** is:

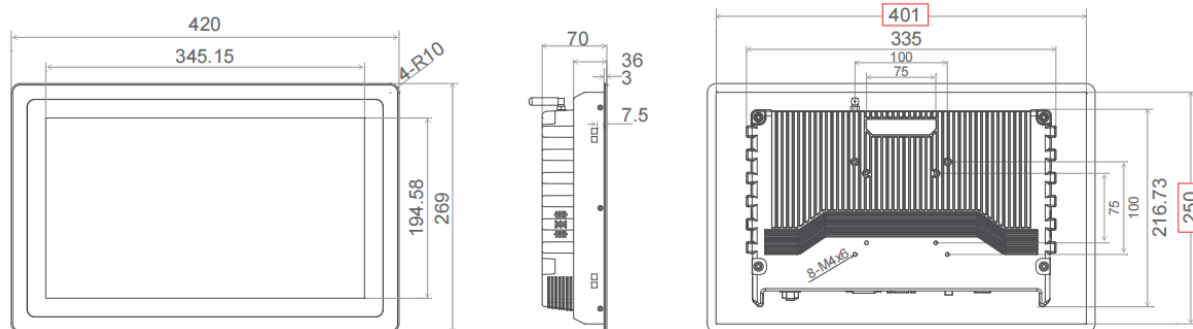
- Based on the TPC156-W210, 15.6" Windows-powered industrial touch screen
- 3mm Super Thin Front Bezel, Best for Embedded Cabinet.
- Pure flat panel IP65 dust-proof and waterproof.
- High precision aluminium alloy material.
- Self-developed fan-less X86 architecture industrial motherboard.
- Dual gigabit adaptive Ethernet ports for faster transmission.
- Industrial protection, applicable to various harsh environments.
- Supporting 12V-36V wide voltage power supply.
- Rich interfaces and strong extensive array of versatile I/O ports

LNK-T15-IP-WIN connections



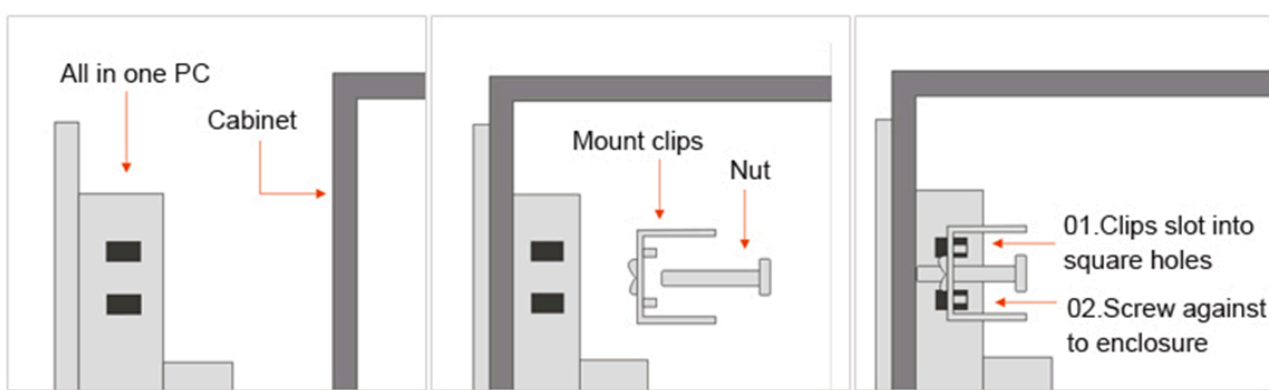
DC	1*DC 2.5	SIM card	Standard SIM card interface, supporting various standards (depending on 3G/4G module)
HDMI	1*HDMI, Support HDMI data output, maximum support 1080P	VGA	1*VGA
USB	2*USB 2.0 2*USB 3.0	RS232	2* RS232
LAN	2*LAN,Dual 1000M adaptive Ethernet	Power	1*Power button
Audio	1*Audio I/O,Support audio input and output	Industrial terminal	1*Industrial terminal

Product Size



Overall Dimensions	W420 x H269 x D70
Size Of Opening	W401 x H250mm

Wall Installation



Technical Specification

Screen size	15.6" TFT LCD
Resolution	1920 x 1080
Viewing Angle	89/89/89/89 (L/R/U/D)
Colour	16.7M
Brightness	300 cd/m2
Contrast Ratio	1000:1
Touch Screen Type	10 point touch projection capacitive touch screen
Light Transmittance	≥88%
Controller Communication	USB
CPU	I5-10210U
CPU Frequency	1.6GHz
RAM	8GB DDR4
Storage	128GB SSD
WiFi	2.4GHz/5GHz Dual Bands
Bluetooth	BT4.0
OS	Windows 11 Pro
Other Support	Support RTC real-time clock and timing switch
Working Temperature	-10°C to 60°C
Storage Temperature	-20°C to 70°C
Relative Humidity	95% Non-condensing
Impact Protection	IEC 60068-2-64, random, 5 ~ 500 Hz, 1 hr/axis
Authentication	CCC/CE/FCC/EMC/CB/ROHS
Waterproof	Front panel reaches IP65 protection level

Other instructions:

For support go to www.innon.com/support

To setup your Link Touch please consult

the manual at support.innon.co.uk

E: support@innon.co.uk T: +44 (0) 20 3953 4100