



Link Touch 21" Windows Touch Screen - LNK-T21-IP-WIN

The overall use of flat aluminium alloy panel, fan-less fully enclosed integrated design. Meet the requirements of different equipment in different environments. It is widely used in industrial control, military, communication, power, network, intelligent self-service terminal equipment and other automation applications.

Features

- 3mm Super Thin Front Bezel, Best for Embedded Cabinet.
- Pure flat panel IP65 dust-proof and waterproof.
- High precision aluminium alloy material.
- Self-developed fan-less X86 architecture industrial motherboard
- Dual gigabit adaptive Ethernet ports for faster transmission.
- Industrial protection, applicable to various harsh environments.
- Supporting 12V-36V wide voltage power supply;
- Rich interfaces and strong extensive array of versatile I/O ports



Product Interface



Product Specifications

Screen Parameters

LCD Size	21.5" TFT LCD
Resolution	1920*1080
Viewing Angle	89/89/89/89 (L/R/U/D)
Colour	16.7M
Brightness	300 cd/m2
Contrast ratio	1000:1

Touch Screen

Touch screen type	10 point touch projection capacitive touch screen
Light transmittance	≥88%
Input mode	Handwriting or capacitive pen
Controller communication	USB

Hardware Configuration

CPU	I5-10210U
CPU frequency	1.6GHz
Integrated graphics	Intel UHD620 Graphics
RAM	8G DDR4(Optional 16G/32G /64G)
Storage	128G SSD (Optional 256/512G)
WiFi	2.4GHz / 5GHz dual bands
Bluetooth	BT4.0(Optional)
Operating system	Windows 10
Other support	Support RTC real-time clock and timing switch



Physical Characteristics

Overall dimensions	W557 x H345 x D65mm
Size of opening	W540.6 x H328.6mm

Interface

DC	1*DC 2.5
HDMI	1*HDMI, Support HDMI data output, maximum support 1080P
USB	2*USB 2.0 2*USB 3.0
LAN	2*LAN, Dual 1000M adaptive Ethernet
AUDIO	1*Audio I/O, Support audio input and output
SIM card	Standard SIM card interface, supporting various standards (depending on 3G/4G module)
VGA	1*VGA
RS232	2*RS232(Optional RS485, RS422, GPIO)
POWER	1*POWER
Industrial terminal	1*Industrial terminal

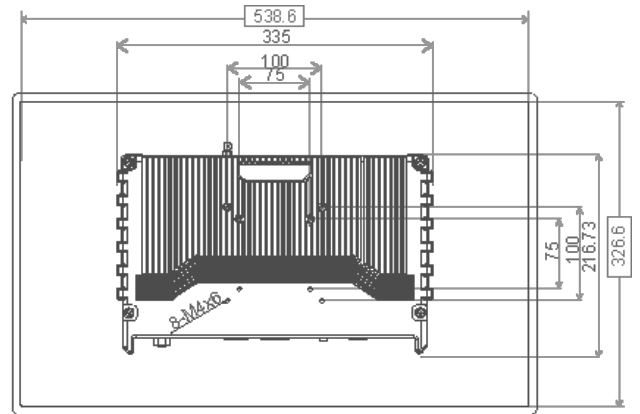
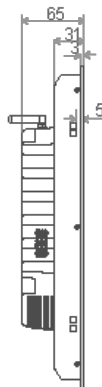
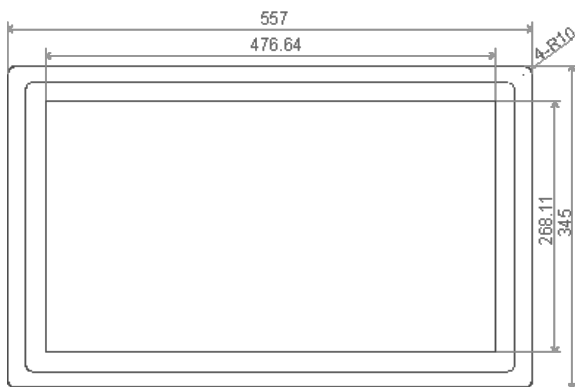
Product Reliability

Working Temperature	-10°C to 60°C
Storage temperature	- 20°C to 70°C
Relative humidity	Humidity: 95% Non-Condensing
Vibration protection	IEC 60068-2-64, random, 5 ~ 500 Hz, 1 hr/axis
Impact protection	IEC 60068-2-27, half sine wave, duration 11ms
Authentication	CCC/CE/FCC/EMC/CB/ROHS
Waterproof	Front panel reaches IP65 protection level

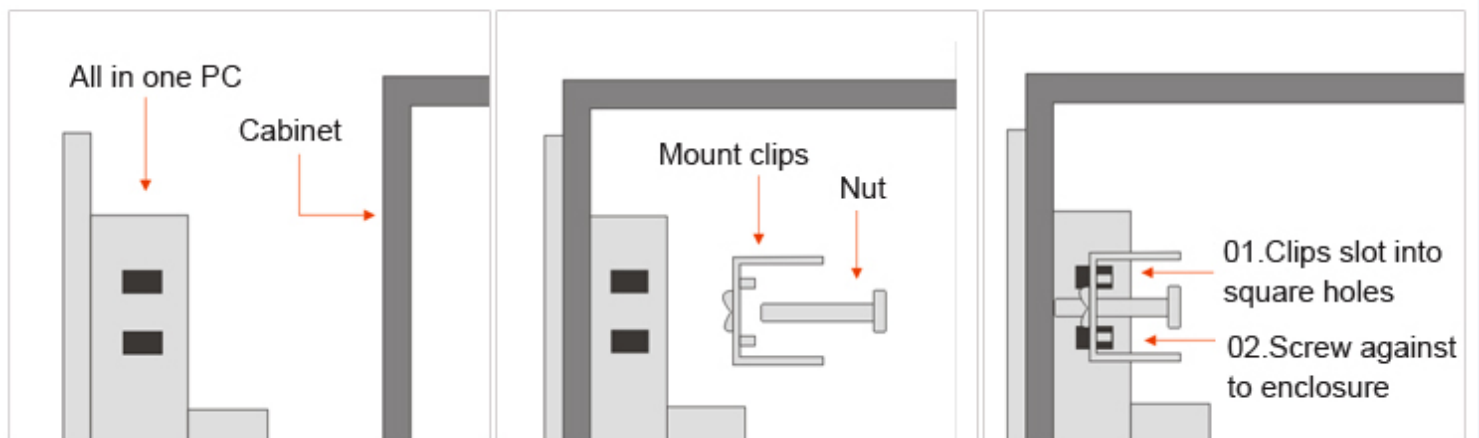
Power Parameters

Input voltage	DC 12V~36V
Static power	18W

Product Size



Embedded Installation



For support go to www.innon.com/support
To set up your Link Touch please consult the manual at support.innon.co.uk