

Link Touch

LNK-T15-IP-WEB



Product Overview

Thank you for purchasing a Link Touch display.

The LinkTouch **LNK-T15-IP-WEB** is:

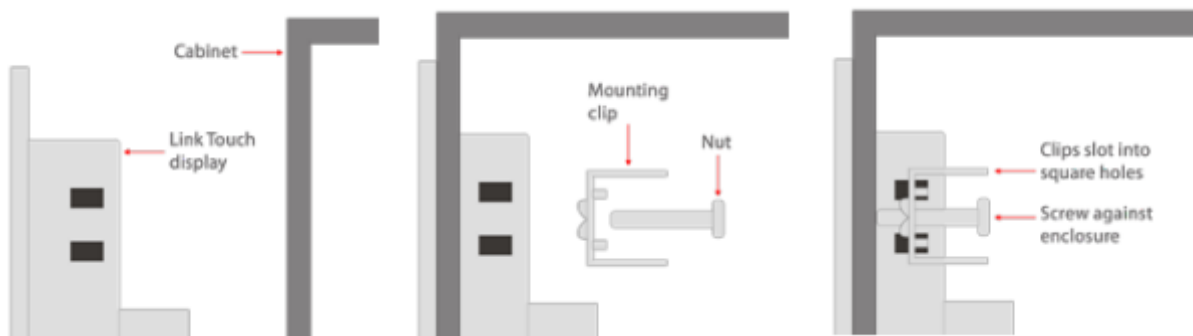
- Based on the TPC101-A100 15.6 Android-powered industrial touch screen
- Designed for displaying the web interface of your Building Management System (BMS/BAS)
- Equipped with both Ethernet IP and WiFi connectivity
- HTML5 compatible
- Benefits from our preinstalled Innon application

The Innon application allows you to configure multiple devices in one go. It also enables you to secure your Link Touch via a secure password.

Please consult the manual by visiting support.innon.com.

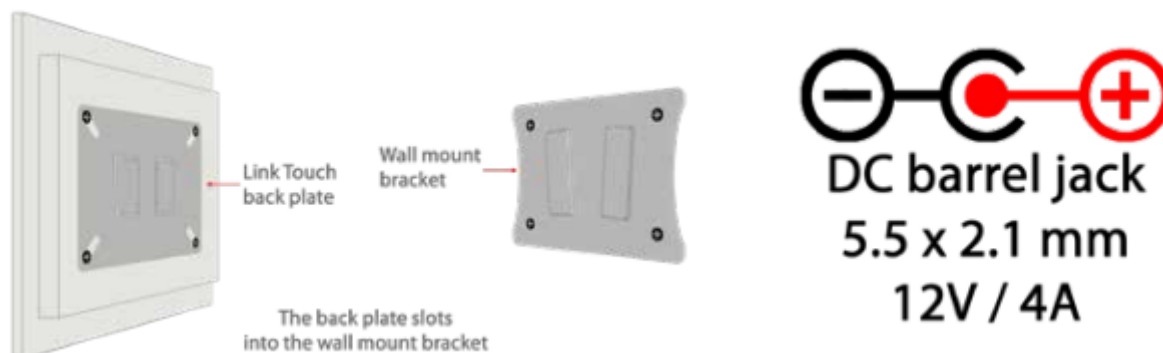
The Link app default configuration password is **link1234**

Panel Installation



***Note - Mounting clips ARE included**

Wall Installation

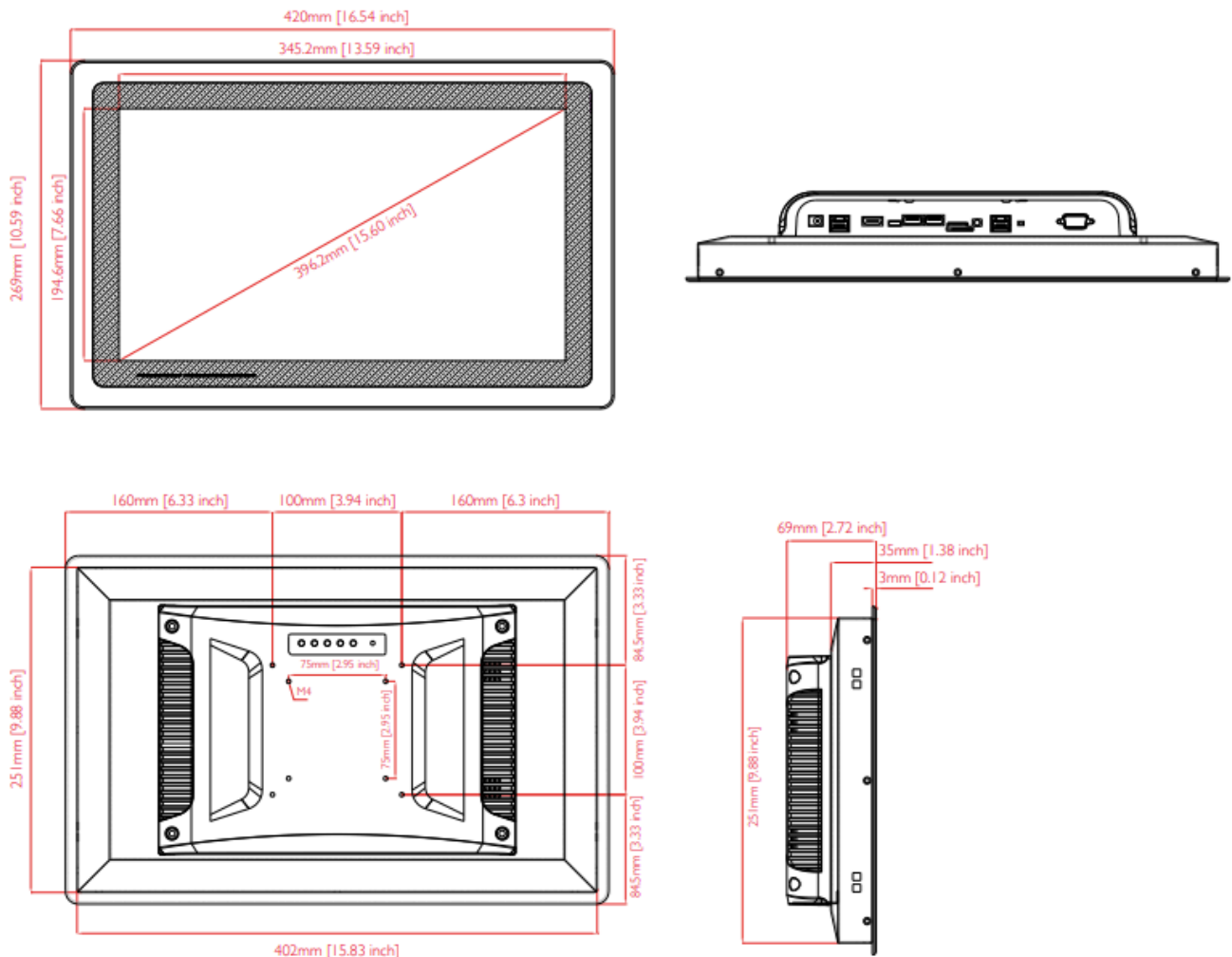


***Note - Bracket NOT included**

Technical Specification

Screen size	15.6 inches
Panel size	Industrial LCD panel A+ grade
Aspect ratio	16:9
Resolution	1920 x 1080
Contrast	1000:1
View angle	85/85/85/85
Luminance	350 nit
Response time	5 ms
Active area	344.2 x 193.6 mm
Display colours	16.7 M (8 bit)
CPU configuration	RK3399 dual core Cortex A72 + quad core Cortex A53, 64 bit, 1.8 GHz
Internal memory	eMMC 32 GB
RAM	4 GB dual channel DDR3
GPU	Mali T864 GPU
WiFi	802.11b/g/n 2.4G and 5G wif
Touch type	Capacitive Touch Screen
I/O	USB2.0 x1, USB3.0 x1, Type C x1, COM232 x1, OTG x1, TF/SIM x1, DC12V x1, HDMI out x1, RJ45 gigabit x1, Audio 3.5mm out x1
Panel install hole	403 x 252 mm
Temperature and humidity	Operating: -20°C to +70°C (-4°F to 158°F), 10 to 80 %RH
	Storage: -30°C to +70°C (-22°F to 158°F), 10 to 90 %RH
Certificates	CE, FCC, RoHS, ISO
Installation	VESA (75 x 75 mm or 100 x 100 mm optional)
Original part no.	TPC156-A100
Material	Aluminium alloy

LNK-T15-IP-WEB: Technical Drawing



Other instructions:

For support go to www.innon.com/support

***To setup your Link Touch please consult
the manual at support.innon.co.uk***

E: support@innon.co.uk T: +44 (0) 20 3953 4100