



## Product Overview

Thank you for purchasing a LinkTouch display.

The LinkTouch **LNK-TI5-IP-WEB** is based on the TPC156-A100 15.6" Android-powered industrial touch screen.

The **LNK-TI5-IP-WEB** is designed for displaying the web interface of your Building Management System (BMS/BAS).

The **LNK-TI5-IP-WEB** comes with both Ethernet IP and WiFi connectivity and is HTML5 compatible.

The **LNK-TI5-IP-WEB** comes with a preinstalled Innon application. The Innon application allows you to connect to your Building Management System.

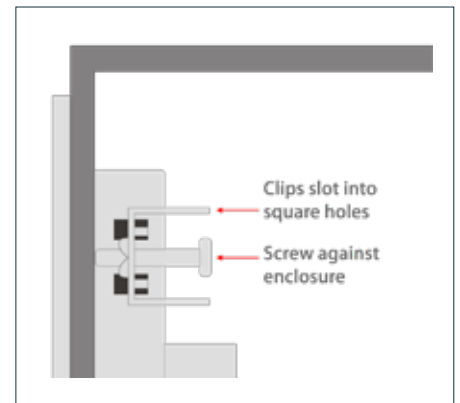
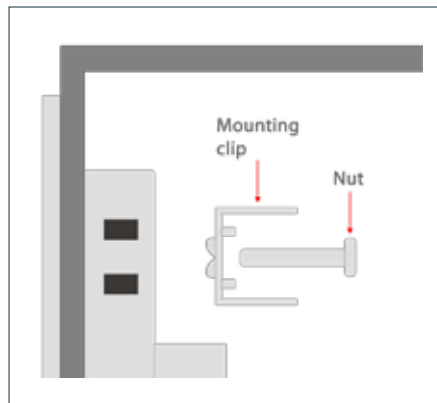
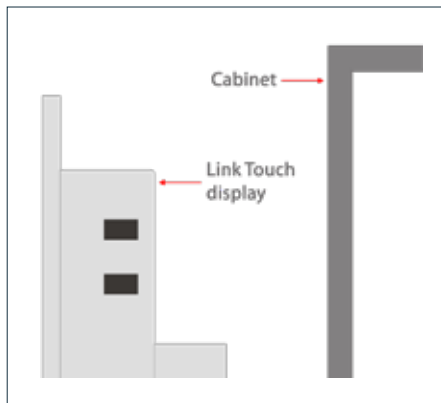
The Innon application allows you to configure multiple devices in one go. It also enables you to secure your **LNK-TI5-IP-WEB** via a secure password.

Please consult the manual by visiting [support.innon.com](http://support.innon.com).

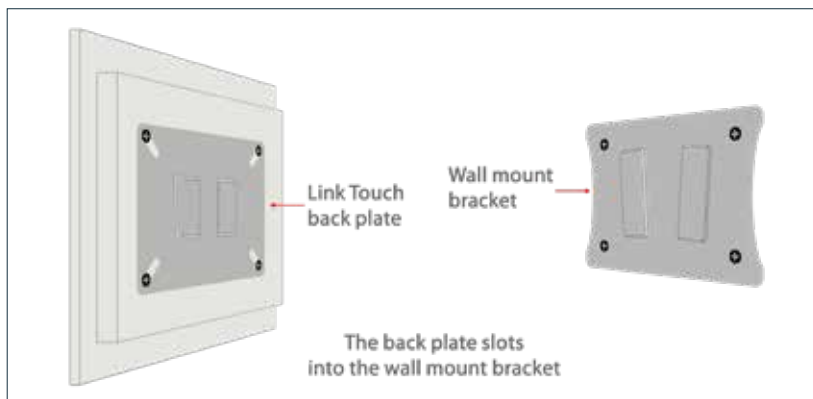
The Link app default configuration password is **link1234**

## Wiring and Installation

### Panel installation



### Wall installation



### Power supply

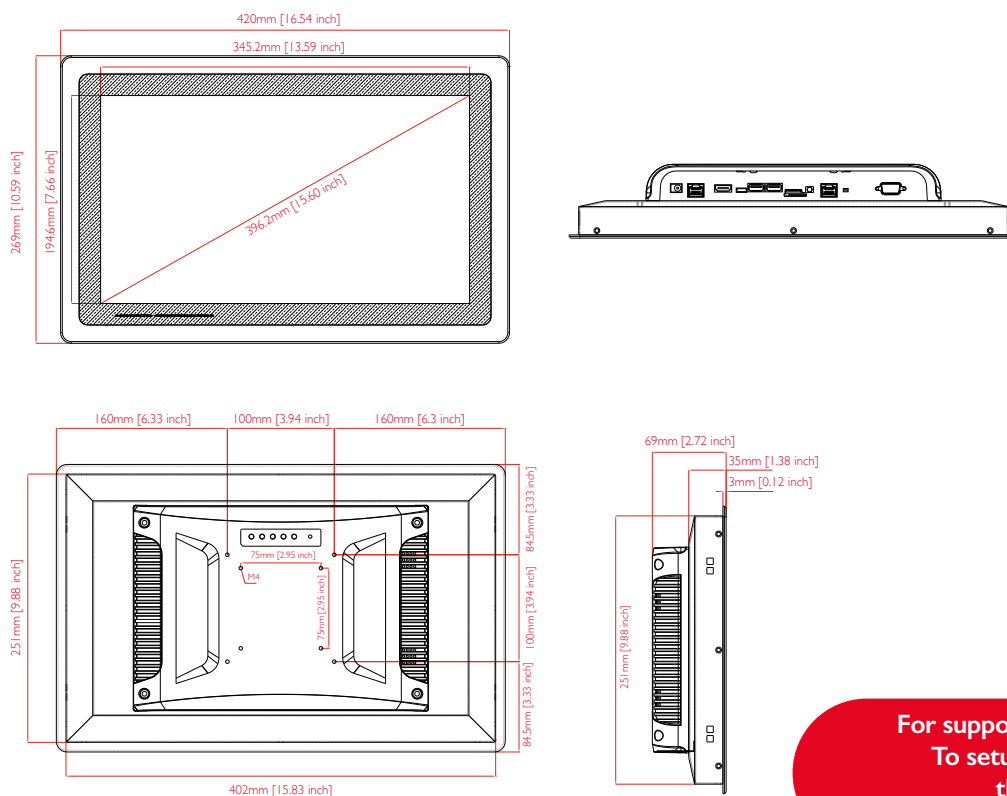


**DC barrel jack**  
**5.5 x 2.1 mm**  
**12V / 4A**

## Technical Specification

<b>Screen size</b>	15.6 inches
<b>Panel type</b>	Industrial LCD panel A+ grade
<b>Aspect ratio</b>	16:9
<b>Resolution</b>	1920 x 1080
<b>Contrast</b>	1000:1
<b>View angle</b>	85/85/85/85
<b>Luminance</b>	350 nit
<b>Response time</b>	5 ms
<b>Active area</b>	344.2 x 193.6 mm
<b>Display colours</b>	16.7 M (8 bit)
<b>CPU configuration</b>	RK3399 dual core Cortex A72 + quad core Cortex A53, 64 bit, 1.8 GHz
<b>Internal memory</b>	eMMC 32 GB
<b>RAM</b>	4 GB dual channel DDR3
<b>GPU</b>	Mali T864 GPU
<b>WiFi</b>	802.11b/g/n 2.4G and 5G wifi
<b>Touch type</b>	Capacitive Touch Screen
<b>I/O</b>	USB2.0 x1, USB3.0 x1, Type C x1, COM232 x1, OTG x1, TF/SIM x1, DC12V x1, HDMI out x1, RJ45 gigabit x1, Audio 3.5mm out x1
<b>Panel install hole</b>	403 x 252 mm
<b>Temperature and humidity</b>	Operating: -20°C to +70°C (-4°F to 158°F), 10 to 80 %RH Storage: -30°C to +70°C (-22°F to 158°F), 10 to 90 %RH
<b>Certificates</b>	CE, FCC, RoHS, ISO
<b>Installation</b>	VESA (75 x 75 mm or 100 x 100 mm optional)
<b>Original part no.</b>	TPC156-A100
<b>Material</b>	Aluminium alloy

## LNK-T15-IP-WEB: Technical Drawing



For support go to [www.innon.com/support](http://www.innon.com/support)  
To setup your Link Touch please consult  
the manual at [support.innon.co.uk](http://support.innon.co.uk)  
E: [support@innon.co.uk](mailto:support@innon.co.uk) T: +44 (0) 20 3953 4100