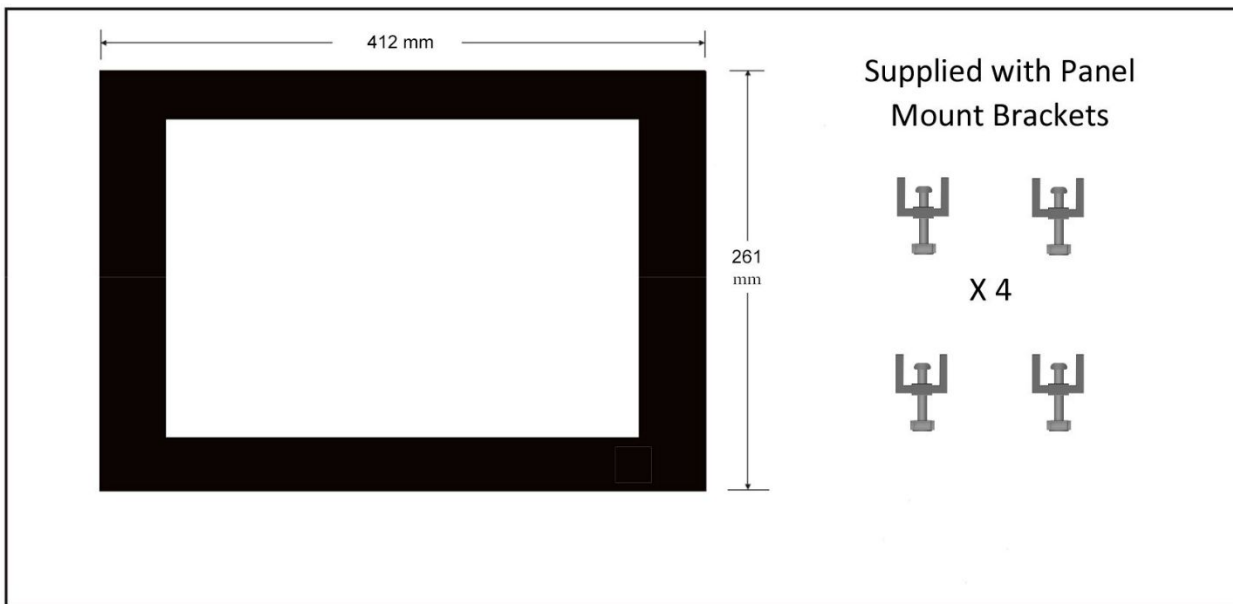
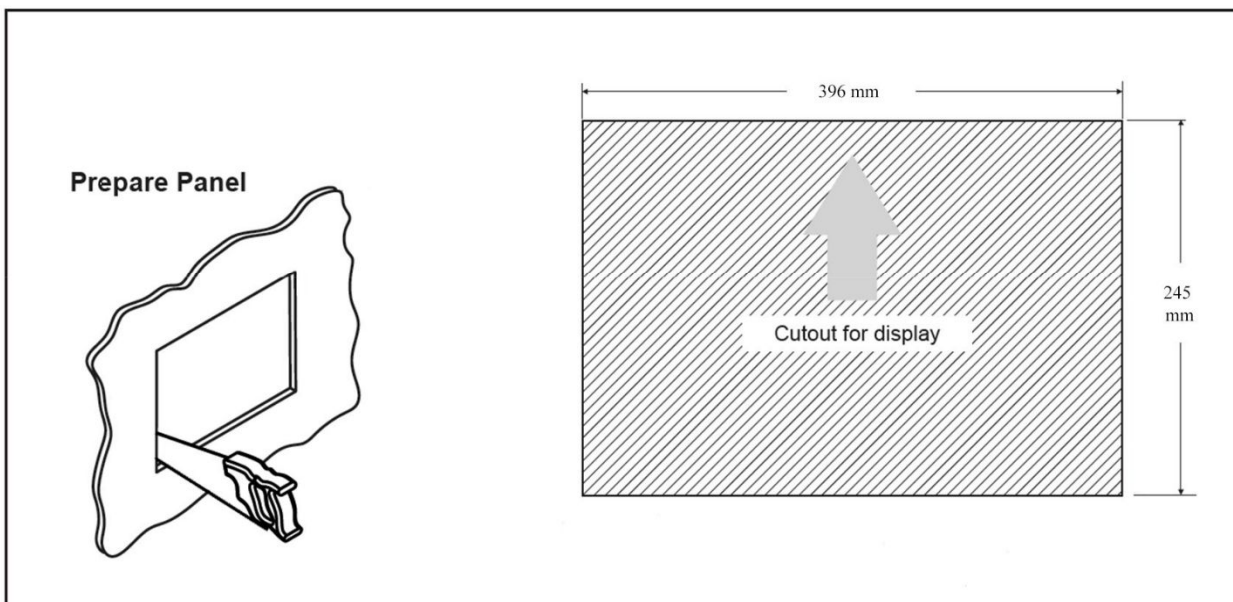


# 15" Inch Industrial Panel Mount Touch Screen PC

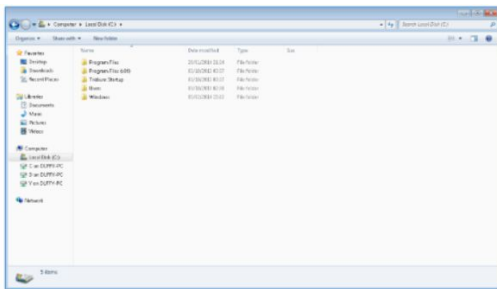
## Physical dimensions:



## Dimensions of hole up be cut to enable recessed fitting:

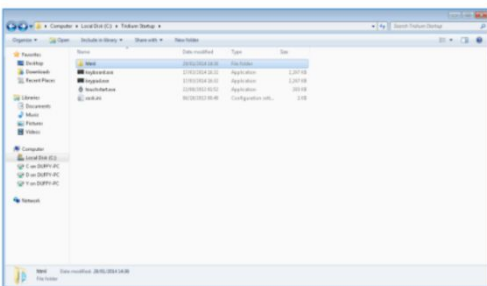


# Touch Screen Customization (Optional)

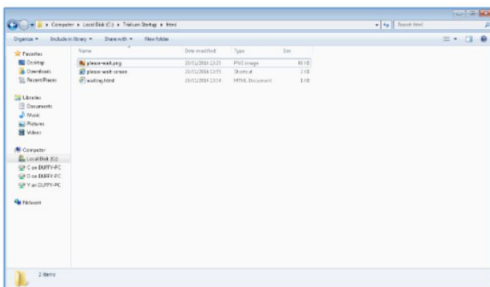


When the Engineering Mode is enabled open the C Drive then open the 'Tridium Startup' folder:

Within the html folder is a file named 'please-wait.png' which is the image of the standard egg timer waiting screen which comes with the Touch Screen.



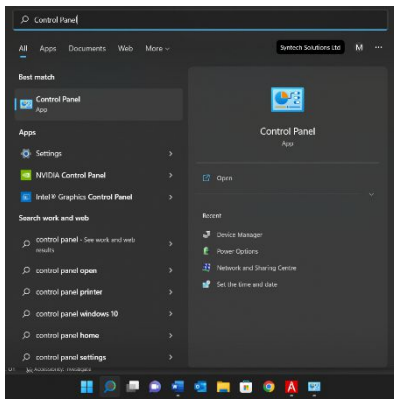
Change the image to one of your choices, firstly it is recommended that the standard image is copied to another folder for safe keeping just in case it is needed again in the future.



Simply replace the image 'please-wait.png' file with an image file of your choice. However, the name and file type of the image which is to be used must remain the same i.e., 'please-wait.png' must remain in the html folder.

**Important note:** For the Touch Screen to function and be displayed in a full screen mode the Tridium system must be configured in 'Hand-Held Mode'.

This is done within the Tridium system when first configuring settings. For more details on the Hand-Held Mode within a Tridium system please refer to the relevant Tridium literature.

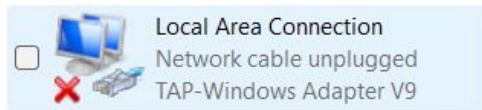


Using the standard Microsoft Keyboard, which was launched in step two, select Control Panel which can be found in the windows start icon.

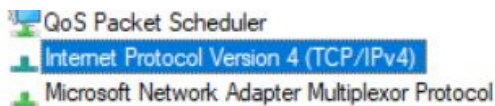
(This is usually found in the bottom left-hand corner of the screen)



Upon entering the Control Panel, a menu will be presented. Click on the Network and Sharing Icon. (Shown to the left)



Then select the Local Area Connections option. (Shown to the left)



Then select 'Protocol Version 4 TCP/IPv4' (Shown to the left)

From the Internet Protocol Version 4 (Tcp/IPv4) Properties menu, enter the designated IP address for the Touch Screen Display Panel. This must not conflict with any IP address on the system, however, must be on the same IP range and subnet mask of the system you are connecting with.

To enter the Kiosk mode and having completed all previous steps to this point, simply restart the Touch Screen by pressing the Power Button. Once the Touch Screen has restarted, all settings will be retained.

# Touch Screen Test Certificate.

**OEM License :**

**Date :**

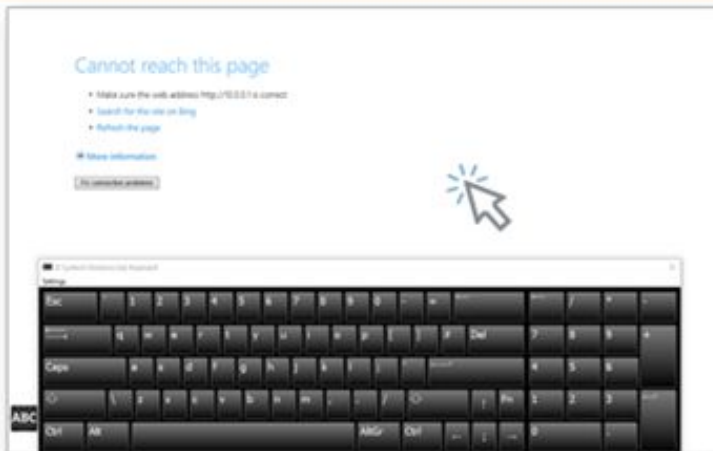
20/09/2022

## **Software (Installation)**

## **Hardware (Operation)**

## **Hardware (Items In Pack)**

Windows Only <input type="checkbox"/>	Power Button Operates as sleep <input type="checkbox"/>	Power Supply <input type="checkbox"/>
Tridium Optimised <input type="checkbox"/>	S0 Mode set in Bios <input type="checkbox"/>	4-Off fixing brackets <input type="checkbox"/>
Trend Optimised <input type="checkbox"/>	<input type="checkbox"/>	Stylus Pen <input type="checkbox"/>
Cylon Optimised <input type="checkbox"/>	<input type="checkbox"/>	Pen Holder <input type="checkbox"/>
OEM Licence Installed & verified <input type="checkbox"/>	<input type="checkbox"/>	Installation instructions <input type="checkbox"/>



Firstly, click on the Internet Explorer page. Press Ctrl then Q to quit the kiosk mode script.

Press Alt, FN then F4 to close the Internet Explorer and exit to the desktop

**(This Engineering Mode)**

**Once you have completed the two steps above, the desktop screen will be visible. However, the default (restricted) keyboard will still be running. Simply close the keyboard down and follow the steps below:**

Press and hold the Stylus Pen into the display for a minimum of two seconds until a menu is launched. **(This is like a right click on a computer mouse).**

Select the 'Display Keyboard' option

Once the Windows Keyboard is displayed simply click on the Windows button to launch settings.