

Technical Document

Niagara Java-based Web Clients Guide

May 1, 2019

niagara

This PDF was created from documentation on docs.tridium.com. For the most current Tridium product documentation, go to docs.tridium.com.

Using Niagara Web Launcher

When using this feature, just as with Web Start, the web browser is needed only to download the installer file.

Once the installer file (`NiagaraWebLauncher*.msi`) is downloaded, it installs the Niagara Web Launcher application on your device. The Niagara Web Launcher file (`webLauncher.exe`), which is saved to the `C:\ProgramFiles\Niagara Web Launcher` directory by default, is used to launch the application. After installation has completed, you can configure a Windows shortcut for the file. The browser is not needed again.

Related Links

- [Downloading the installer](#)
- [Installing Web Launcher](#)
- [Web Launcher limitations](#)

Downloading the installer

When you initiate a browser connection to the station the pre-login window provides a link under the login dialog that reads: "To connect using Niagara Web Launcher click here". Clicking this link downloads and auto-runs the installer file.

Figure 2. Example Niagara Web Launcher link that downloads and launches the installer

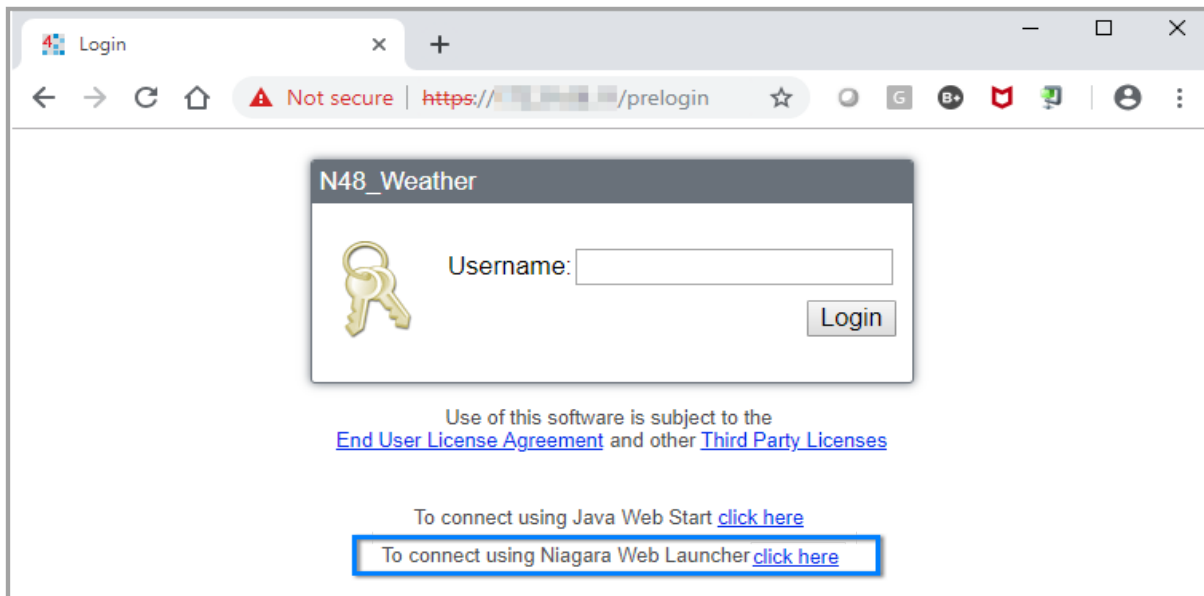
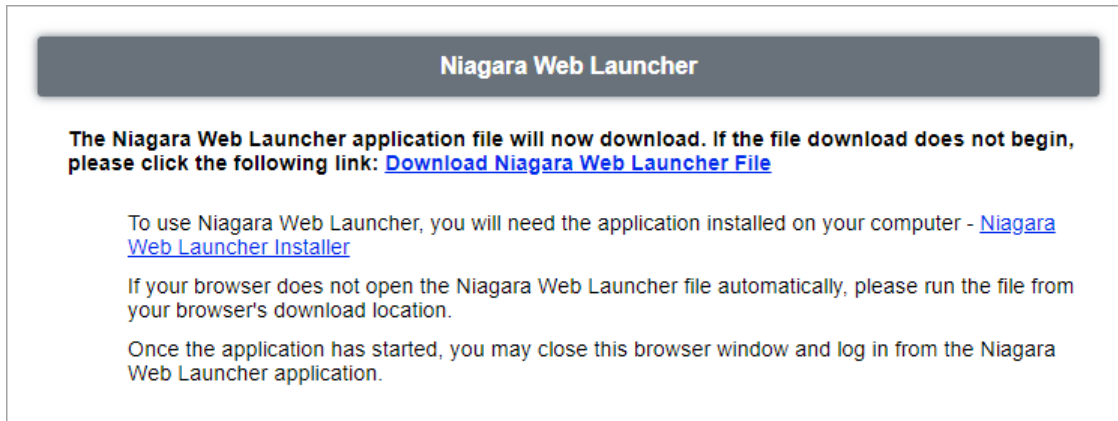
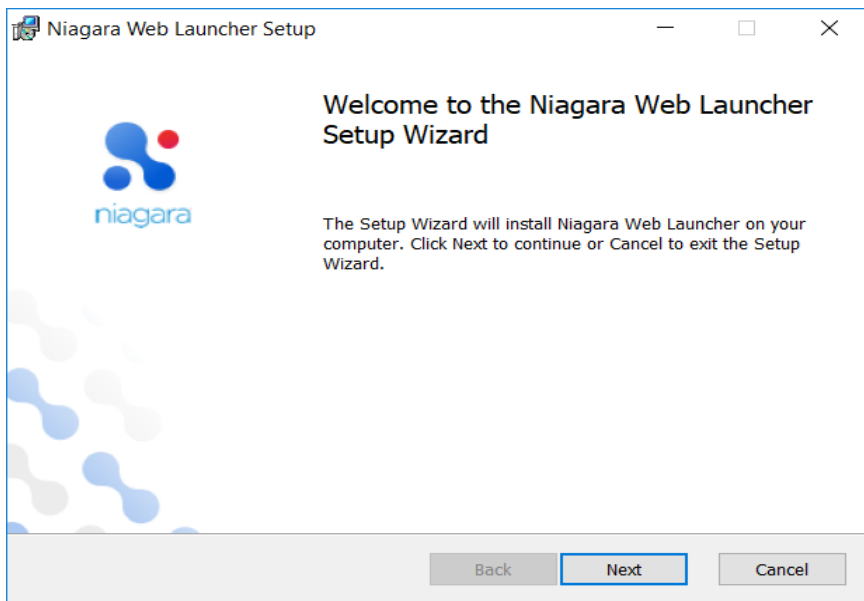


Figure 3. The NiagaraWebLauncher.msi installer file downloads



NOTE: If the installer does not automatically run, access the `NiagaraWebLauncher*.msi` file in your browser's downloads location and double-click the file to run the setup wizard shown below. You may notice another file, `<stationName>.nwl` is downloaded to the same location. This is a text file containing information that tells Web Launcher how to connect to that particular station. So on subsequent connections, there is no need to download and run the `*.msi` installer file again. Instead you could double-click the `*.nwl` file which launches `webLauncher.exe`.

Figure 4. Niagara Web Launcher Setup Wizard window



Once the installer launches the Niagara Web Launcher Setup Wizard, you can close the browser or you can go to a different web page while the setup wizard runs and installs the executable file.

Related Links

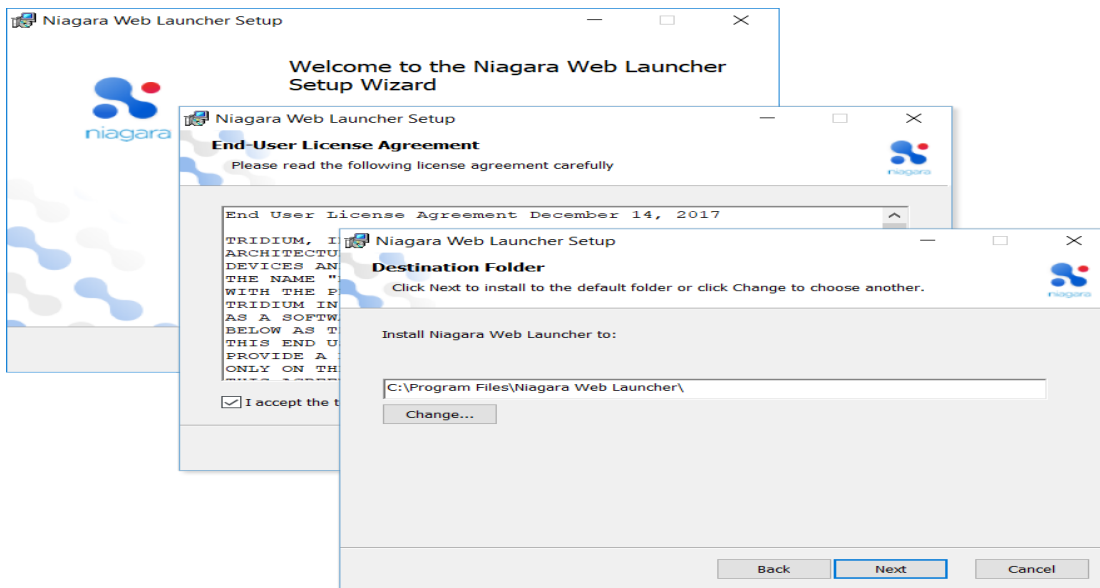
- [Using Niagara Web Launcher \(Parent Topic\)](#)

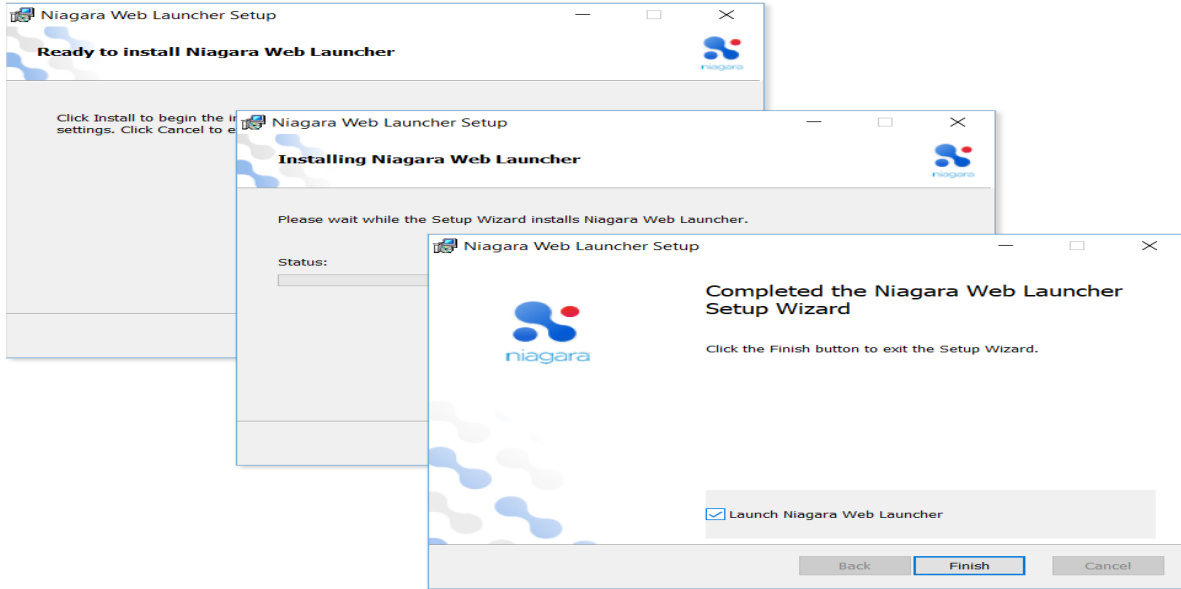
Installing Web Launcher

The installer file (NiagaraWebLauncher*.msi) which should auto-run upon downloading, opens the Niagara Web Launcher Setup window. The setup wizard runs and installs the Web Launcher executable file.

As with most installer wizards, on-screen instructions in the subsequent windows walk you through the installation process. Simply click **Next** to advance to the next window, **Back** to see a previous window, **Install** to begin the installation, and on completion click **Finish** to exit the installer. Click **Cancel** to exit without completing the installation.

Figure 5. Niagara Web Launcher Setup Wizard

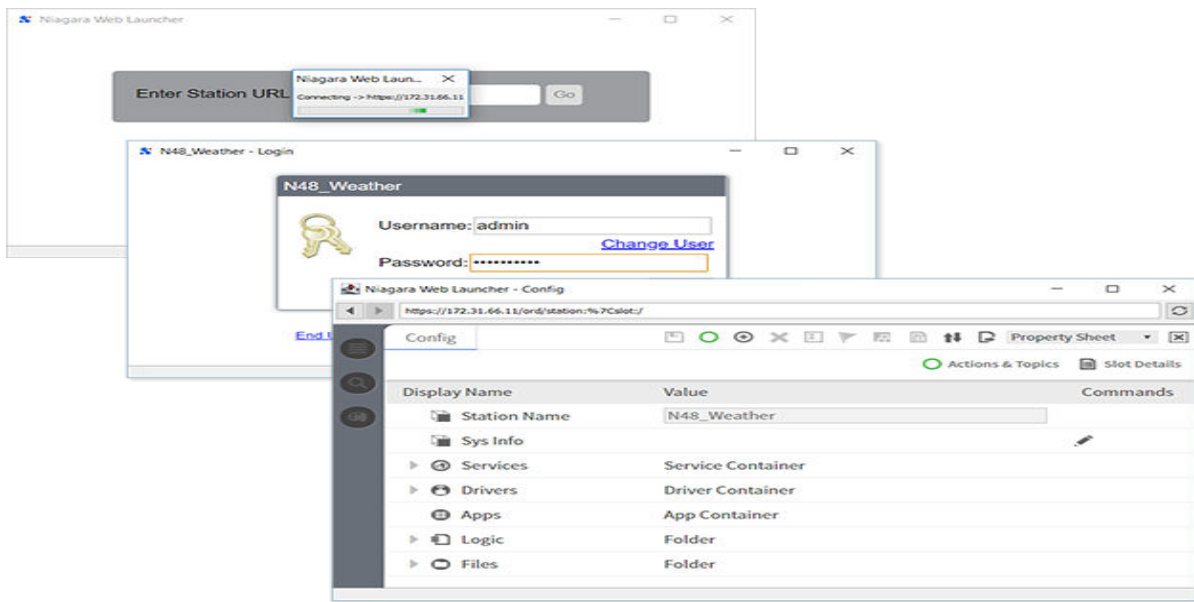




When the installer finishes, if the **Launch Niagara Web Launcher** checkbox is selected it automatically launches the Niagara Web Launcher application in a separate window.

In the Niagara Web Launcher window, first you are prompted to enter a Station URL, then your Username, and Password credentials to connect to the station.

Figure 6. Opening the station connection via Web Launcher



Once the Web Launcher executable file is installed you only need to run `webLauncher.exe` to connect to the station. There is no longer any need to access the login page via a browser or to run the installer file again. Optionally, you can create a Windows shortcut for the `webLauncher.exe` file to use on subsequent connections.

NOTE: The installer also installs `webLauncher_debug.exe` (in the same location as the Web Launcher executable) which you can run if you need debugging information. Double-clicking the file to opens a Debug window and a Web Launcher window.

Related Links

- [Using Niagara Web Launcher \(Parent Topic\)](#)

Web Launcher limitations

Known limitations of the Web Launcher implementation in Niagara are described here.

When the Niagara Web Launcher application creates the Workbench view, that view is not contained within a web page. The view has no direct relationship to HTML elements in a web page, and the HTML does not know about the view. The view is not displayed as part of the layout of a page. This means that certain things that might have been possible with the applet in a browser will not work in Web Launcher. An applet contained within an HTML frame, for instance, cannot be supported in Niagara Web Launcher.

An Hx view containing an instance of the applet may not display in a browser exactly as it did in a previous release(s). The Niagara Web Launcher application is unable to display the applet in-line with the HTML content. Instead, the application positions the HTML and applet next to each other. The application shows the Hx path bar at the top of the view, with the applet below it. HTML content below the applet is not visible.

Additionally, the AX Web Launcher application cannot open an applet view from the Niagara 4 station, and vice versa. In this situation, you must open the Web Launcher application from the other station.

Related Links

- [Using Niagara Web Launcher \(Parent Topic\)](#)