

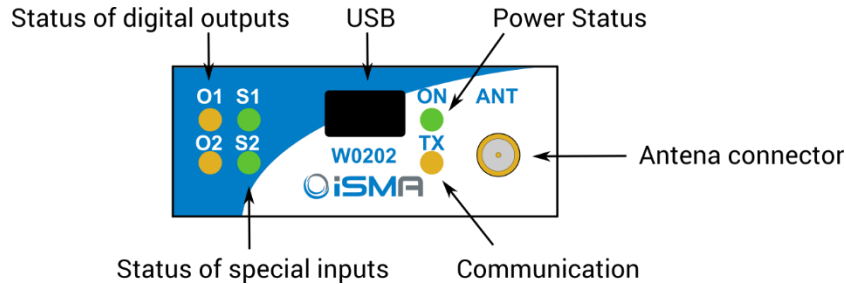


iSMA-B-W0202



SPECIFICATION	
Supply	DC: 24 V ± 20%, 2 W; AC: 24 V ± 20%, 3 VA
Special inputs	2 - voltage measurement, resistance, dry contact, fast counter 50/100 Hz
Digital outputs	2 - relay output; Resistive load max. 3 A @ 230 V AC, 3 A @ 30 V DC Inductive load max. 75 VA @ 230 V AC, 30 W @ 30 V DC
Radio	Frequency: 868 MHz, Transmission Power: +20 dBm (100 mW)
Interface	RS485, Modbus up to 128 devices on the bus
Address	Setting by configuration software from 1 to 247
Baudrate	Setting by configuration software from 2400 to 115200 bps
Ingress Protection	IP40 - for indoor installation
Temperature	Operating: -10°C to +50°C; Storage -40°C to +85°C
Relative Humidity	5 to 95% RH (without condensation)
Connectors	Screw connector 2.5 mm ² , Mini USB
Dimensions	99 x 56 x 17 mm
Mounting	DIN rail mounting (DIN EN 50022 norm)
Housing material	Plastic, self-extinguishing PC/ABS

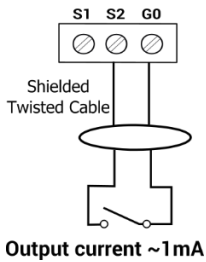
TOP PANEL



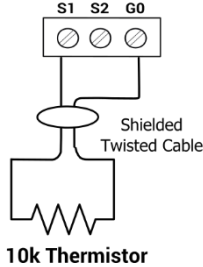
SPECIAL INPUTS

COMMUNICATION

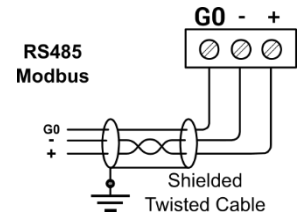
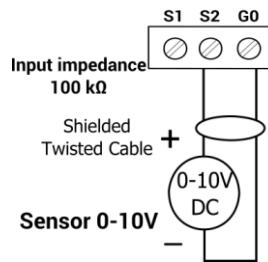
Dry Contact



Temp. measurement

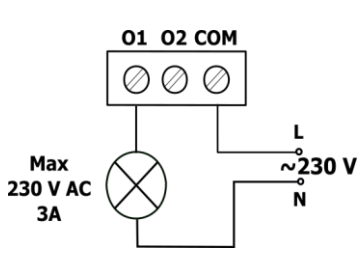
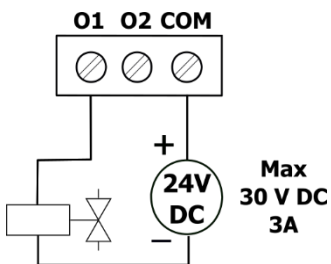


Voltage measurement

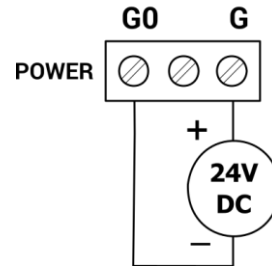


DIGITAL OUTPUTS

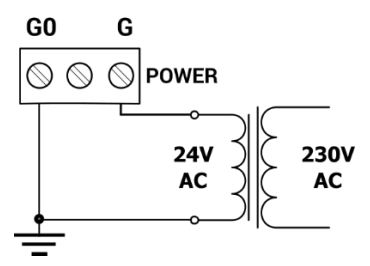
POWER SUPPLY



DC Voltage



AC Voltage



WARNING

- Note, an incorrect wiring of this product can damage it and lead to other hazards. Make sure the product has been correctly wired before turning the power ON.
- Before wiring, or removing/mounting the product, be sure to turn the power OFF. Failure to do so might cause electric shock.
- Do not touch electrically charged parts such as the power terminals. Doing so might cause electric shock.
- Do not disassemble the product. Doing so might cause electric shock or faulty operation.
- Use the product within the operating ranges recommended in the specification (temperature, humidity, voltage, shock, mounting direction, atmosphere etc.). Failure to do so might cause fire or faulty operation.
- Firmly tighten the wires to the terminal. Insufficient tightening of the wires to the terminal might cause fire.

TERMINALS OF THE DEVICE

